



NEWINGTON  
LONDON

4 Bedrooms

Apartment

Located in London

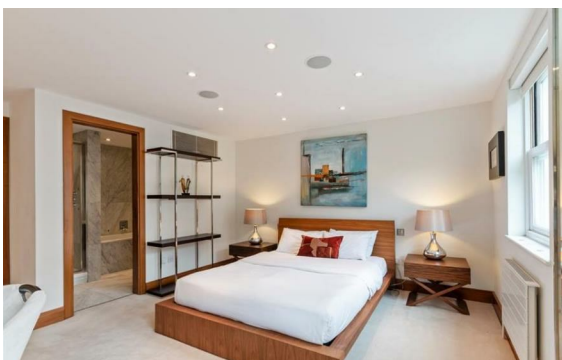
£1,425 Per Month



info@newingtonstates.com

<http://www.newingtonstates.com>

020 7724 2233



An immaculately presented four-bedroom apartment on the 2nd floor of gorgeous mansion block with lift. Entering into a spacious entrance hall, leading through to a large reception room, and a separate kitchen. There are four double bedrooms with an additional single bedroom or study and two bathrooms, one of which is en suite. The property has wooden floors throughout, high ceilings and many original period features with the most modern of conveniences.

Old Marylebone Road is situated close to local amenities as well as being near the open spaces of Regents Park. Transport links include Marylebone Station (British rail) and Marylebone (Bakerloo line) underground station.

EPC: C

## Energy Efficiency Rating: C

Agents Note: Whilst every care has been taken to prepare these particulars, they are for guidance purposes only. All measurements are approximate and are for general guidance purposes only and whilst every care has been taken to ensure their accuracy, they should not be relied upon and potential buyers/tenants are advised to recheck the measurements.

# NEWINGTON LONDON

60 Upper Montagu Street

London

W1H 1SN

020 7724 2233

[info@newingtonstates.com](mailto:info@newingtonstates.com)

<http://www.newingtonstates.com>